



Leggett & James

The Vale of Evesham Property Experts



31 Hinton-On-The-Green

Hinton on the Green, Evesham, WR11 2QU

£900 Per Calendar Month



Located in the village of Hinton on the Green this attractive cottage is available immediately. EPC rating C. Deposit required £1000.00



Living Room

Cosy living room with beamed ceiling and feature fireplace.

Kitchen

With a range of fitted units, electric oven, hob and extractor over.

Shower Room

With white suite comprising low flush WC, wash hand basin and new shower cubicle

Bedroom 1

With feature fireplace (not to be used)

Bedroom 2

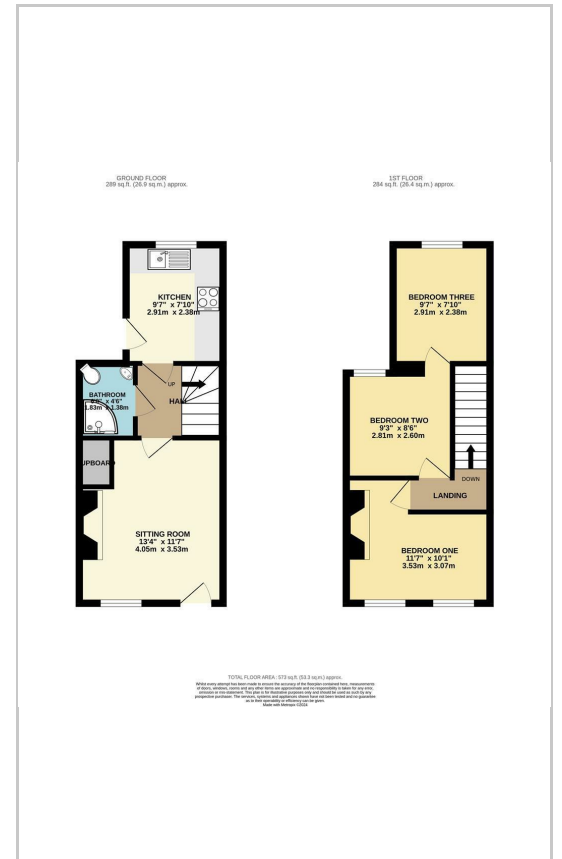
Dressing Room

With wardrobe

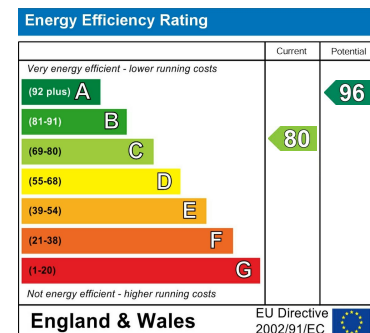
Area Map



Floor Plans



Energy Efficiency Graph



These particulars, whilst believed to be accurate are set out as a general outline only for guidance and do not constitute any part of an offer or contract. Intending purchasers should not rely on them as statements of representation of fact, but must satisfy themselves by inspection or otherwise as to their accuracy. No person in this firm's employment has the authority to make or give any representation or warranty in respect of the property.